

**Package Contents:**

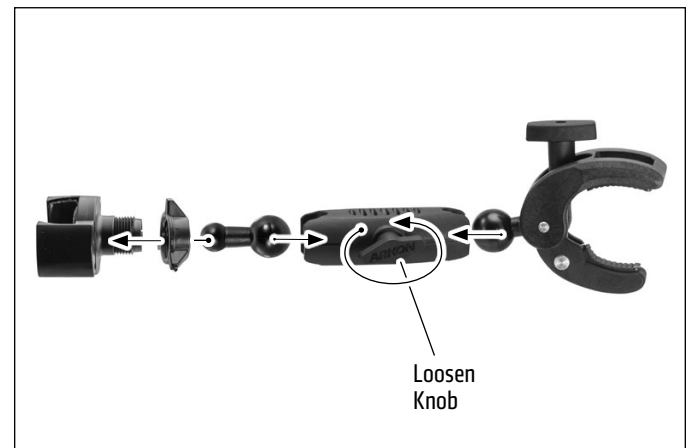
- (1) RV001WR-B – RoadVise® Universal Smartphone Holder
- (1) CPM01B – Robust Clamp Mount with 25mm Ball
- (1) SP-RM250 – Robust Mount Shaft
- (1) SP25MM17 – 25mm Ball to 17mm Ball Adapter

**IMPORTANT:** Do not overtighten ring. Overtightening ring may damage threads on holder and make it difficult to adjust holder.

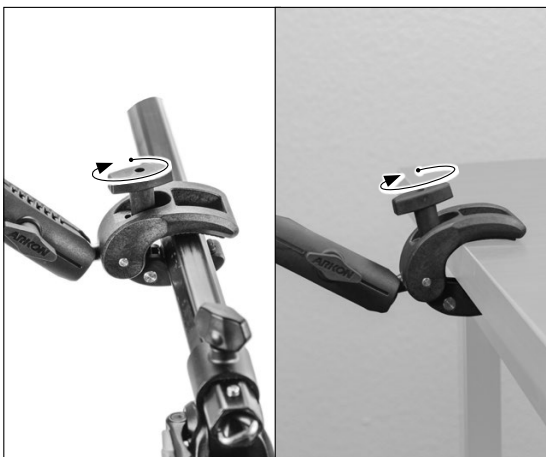
- 1** Robust Mount Shaft that will work best for your mounting environment.\*



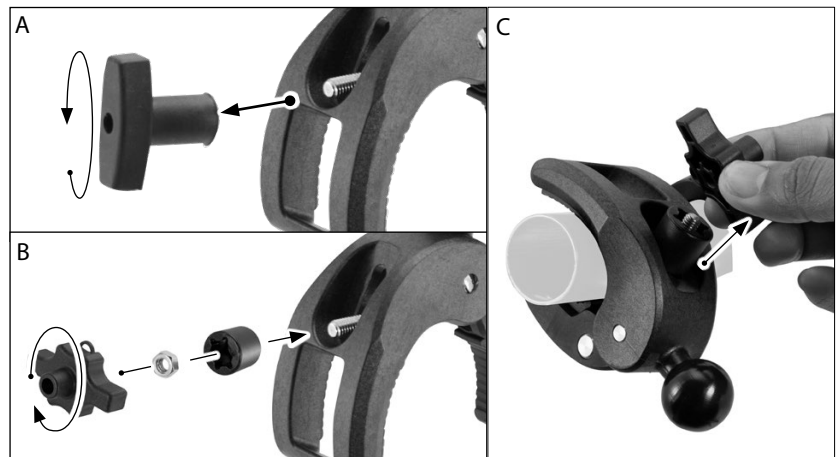
- 2** Loosen the Robust Mount Shaft to attach the adapter, and clamp mount. Tighten to secure.



- 3** Tighten clamp knob to mount to pole or surface.



**Optional:** To secure the clamp mount: (A) remove the existing knob (B) replace with security kit as shown (C) tighten the clamp with the removable knob key, then remove knob to deter theft.



\*To create a custom mount using both Robust Mount Shafts, Arkon recommends Models SP25MM25 (25mm Ball to 25mm Ball Adapter) or Model APT325MM (T-Shaped Adapter with Triple 25mm Ball Pattern).

**Safety Precautions**

Arkon is not responsible for any damages caused to you, your passengers, or your device due to the installation or use of this mount.

# ARKON MOUNTS

**Consumer Hotline:**

**USA** (800) 841-0884

**INT'L** (626) 254-9005

Monday - Friday 9 am - 5 pm, PST

[www.arkon.com](http://www.arkon.com)

Arcadia, CA 91006 USA

Designed in USA | Made in Taiwan and USA

© Copyright 2019 Arkon Resources, Inc.